



ARAPAHOE PARK &
RECREATION DISTRICT

NEW NEIGHBORHOOD PARK MASTER PLAN

WELCOME TO THE 2ND PUBLIC MEETING!

AGENDA:

0. RECAP OF ANALYSIS FROM MEETING #1
1. REVIEW THE THREE ASSEMBLED CONCEPTS
2. RESPOND WITH FEEDBACK ON WHAT IS LIKED/PREFERRED

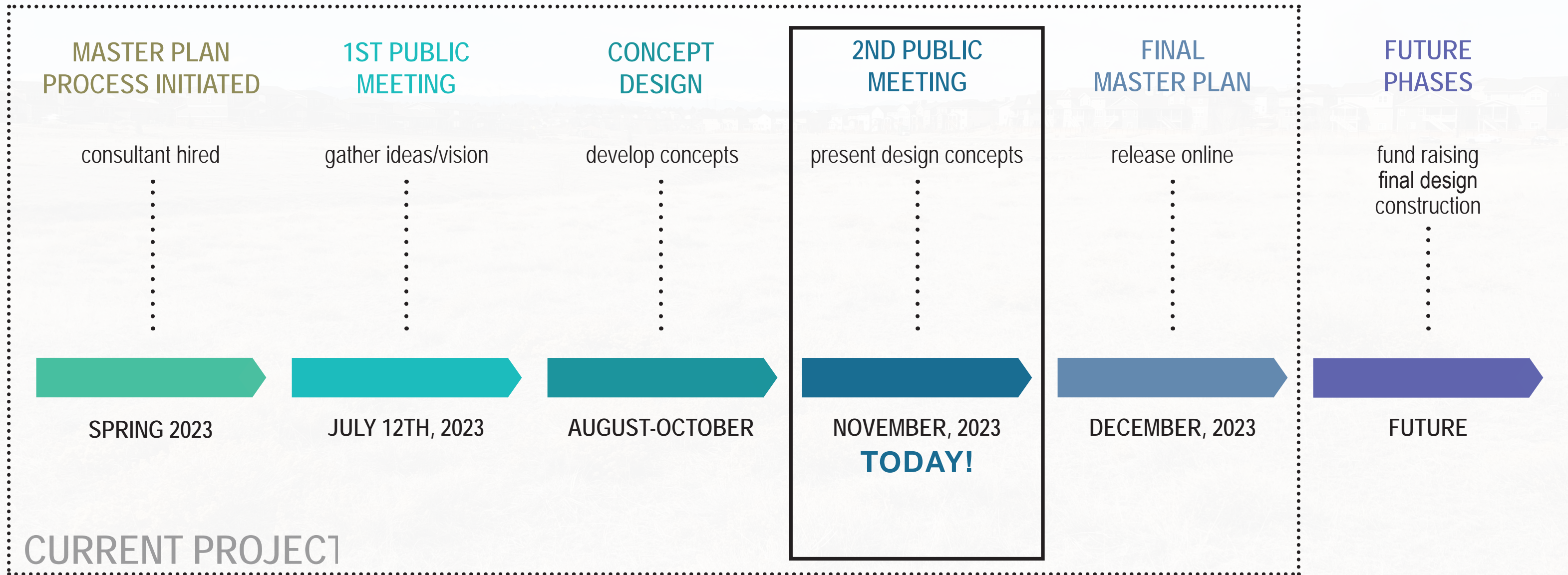


ARAPAHOE PARK &
RECREATION DISTRICT

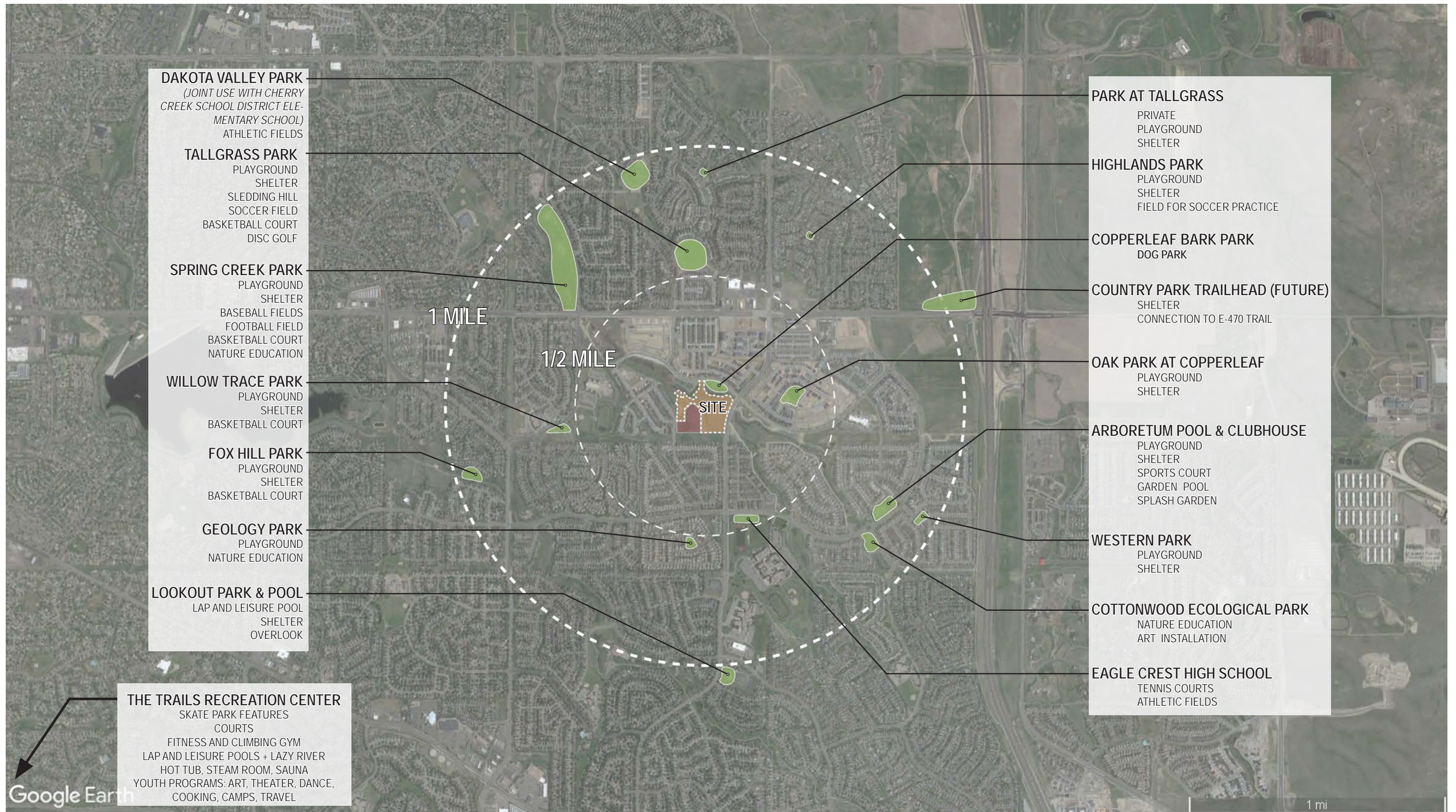
APRD's New Neighborhood Park Master Plan

stream
landscape architecture + planning

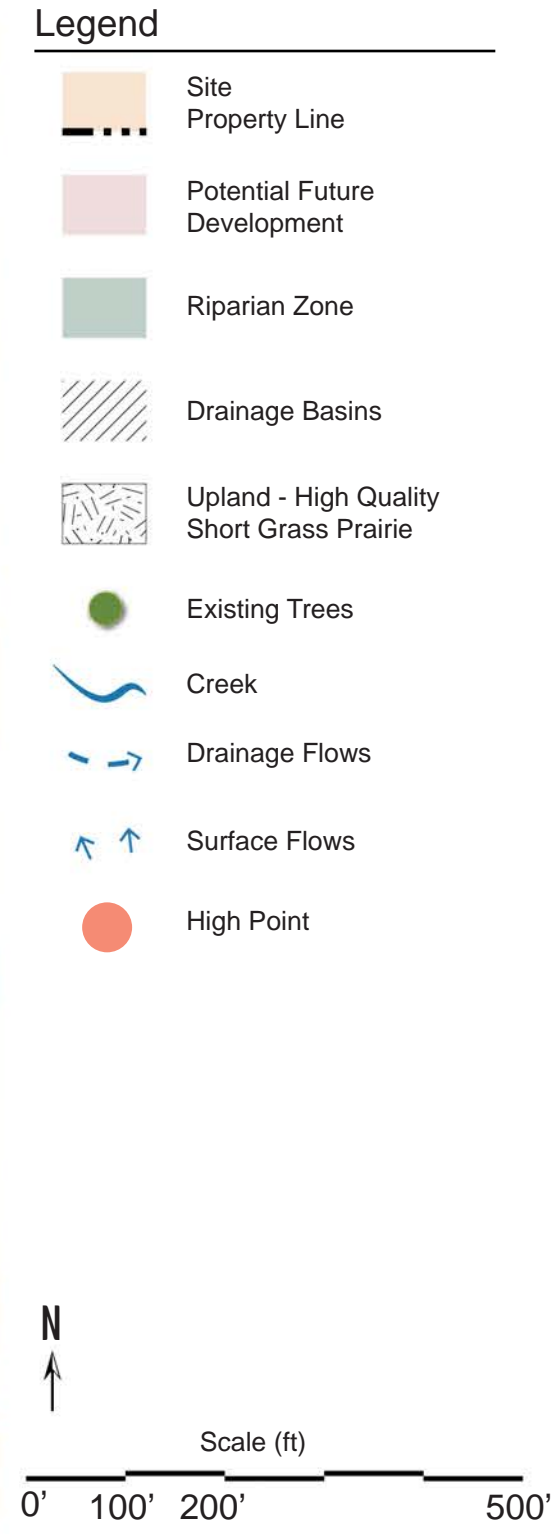
PLANNING PROCESS



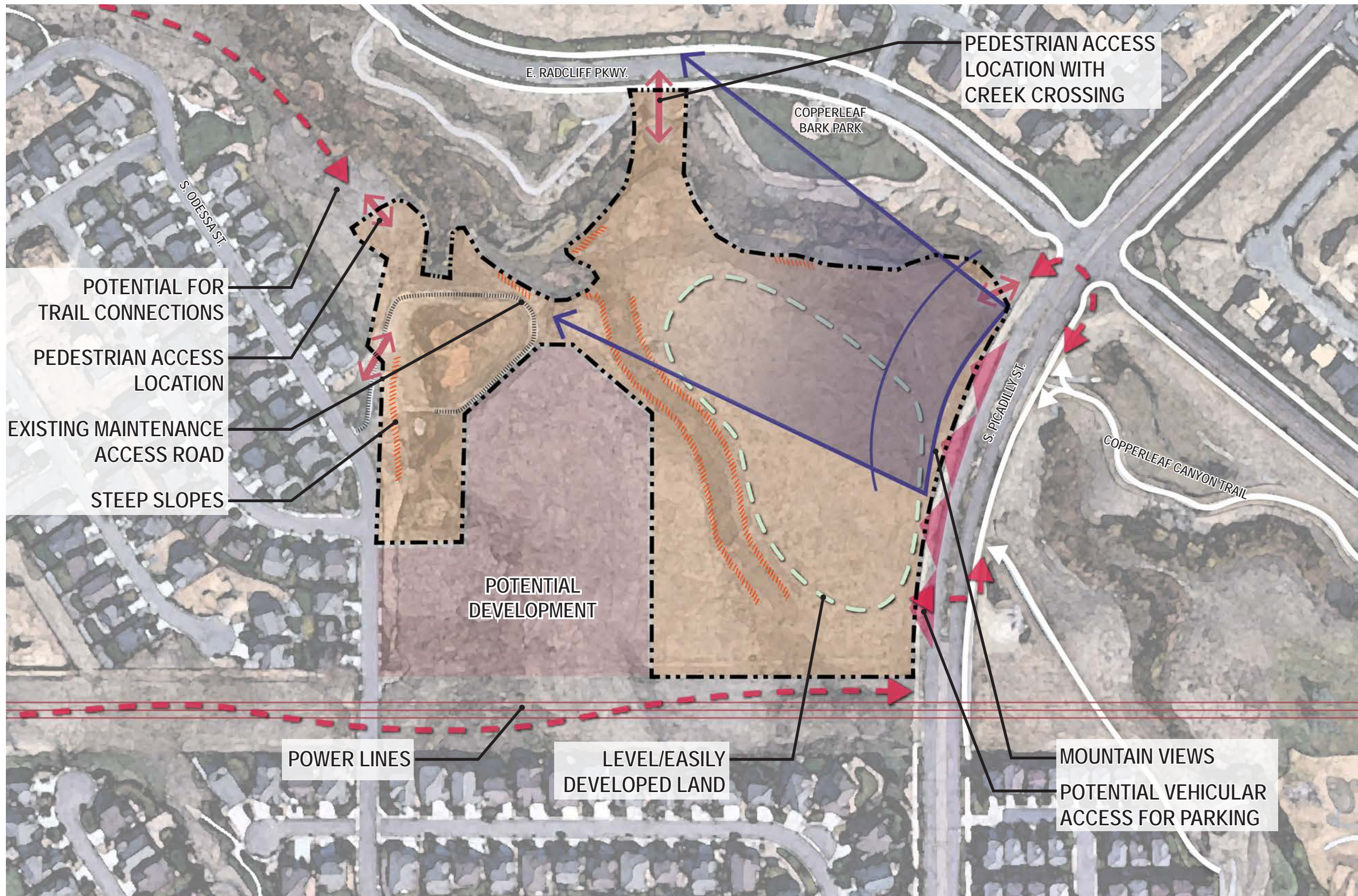
SURROUNDING RECREATIONAL AMENITIES



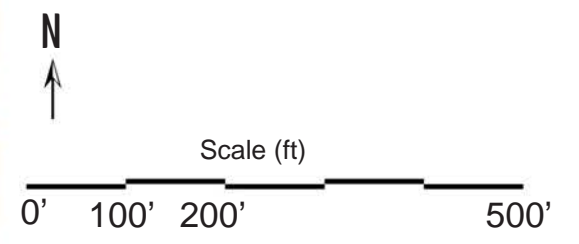
VEGETATION & LANDSCAPE FEATURES



OPPORTUNITIES & CONSTRAINTS



- Legend**
- Site
 - Property Line
 - Potential Future Development
 - Level/Easily Developed Land
 - Steep Slopes
 - Mountain Views
 - Potential Vehicular Access For Parking
 - Potential Pedestrian Access
 - Potential Connections
 - Existing Concrete Paths
 - Existing Maintenance Access Road
 - Power Lines



SITE IMAGERY



SURVEY RESULTS



As a part of APRD's master planning effort for a new neighborhood park in the Copperleaf neighborhood, a first public meeting highlighted the opportunities, constraints, and related resources available to the project site located at the corner of S. Picadilly St. and E. Radcliffe Pkwy. (Please see the APRD website for information shared in the public meeting). This memo shares the results of the survey shared following the first public meeting. Stay tuned for the second public meeting in the upcoming weeks.

The results of this survey show that of the **199 responders**, the typical responder was a parent between the ages of 35-54 (**72%**), with children under the age of 12 (**63%**) that lives where they can either see the site from their home or within 6 blocks of the site (**86%**), and would walk to the park (**69%**).

The highest ranking **typical activities** when survey participants go to a park are:

- Playground (**45%**)
- Exercise (**22%**)
- Sports (**19%**)

The three highest **character attributes** that participants felt that this new neighborhood park should have were (all with a majority of participants selecting these):

- Kids Play Areas (**61%**)
- Active, Social, Community Gathering Spaces (**52%**)
- Sports and Fitness Oriented (**52%**)

Considering **specific programming** and activities for the site, responders showed their highest interest in the following listed options:

- Walking Paths/Running Loop (**65%**)
- Playground (**62%**)
- Picnic Areas/BBQ Grills/Shade Shelters (**58%**)
- Games (Cornhole, Horseshoes, etc.) (**45%**)
- Nature Trail (**44%**)
- Athletic Fields (**40%**)

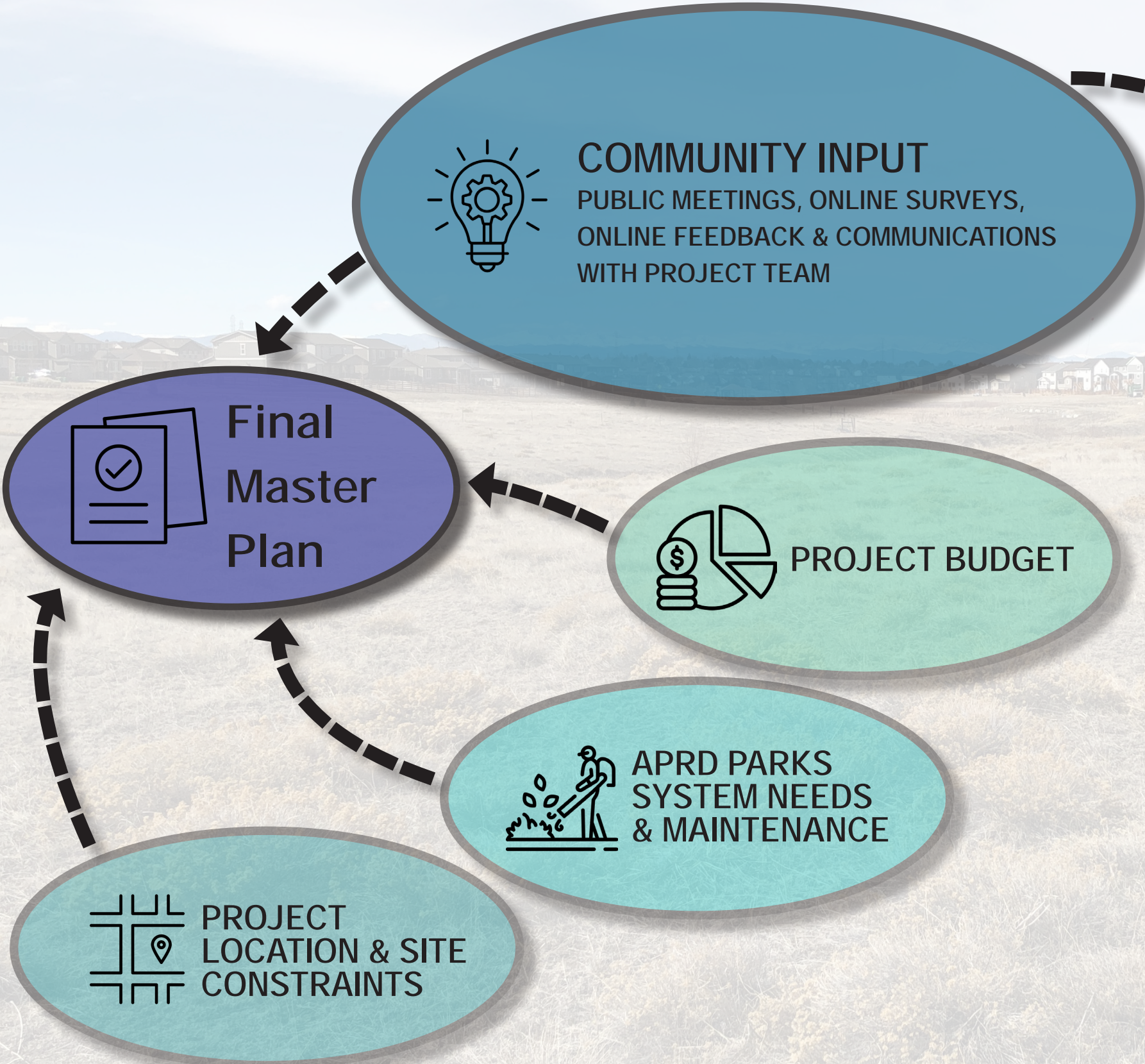
Additionally, in the survey, we asked participants to write in and share their thoughts on what other activities and programming they would like to see in the park. Common ideas seen throughout the answers included:

- Parks Mentioned as Inspiration:**
- Cheyenne Arapaho Park
 - Central Park at the Farm
 - Red-Tailed Hawk Park
 - Centennial Park
 - Long's Pine Grove Park
 - Deputy Zach S. Parrish III Memorial Park
 - Wheatlands Community Park

Keep Natural
 Safe Connections to Neighborhood
 Shade for Gathering
 Stay Cool
 Restrooms
 Pump Track/Biking
 Disc Golf
 Adult Oriented Not Just Playground
 Splash Pad
 Larger Scale Playground
 Basketball/Multi-Use Courts
 Older Kid Play
 Sports Fields
 Teen Activities
 New, Engaging Playground



DECISION-MAKING INFLUENCES



COMMUNITY INPUT

PUBLIC MEETINGS

The public will have the opportunity to ask questions at the public meetings and engage directly with the project team and presentation content.

PUBLIC OPINION SURVEYS

Survey data will be collected following both public meetings. Results will be combined with feedback during the meetings.

ONLINE FEEDBACK ON DRAFT MASTER PLAN

Online feedback pertaining to the draft master plan will contribute to the creation of the master plan.

POTENTIAL PARK CONCEPTS

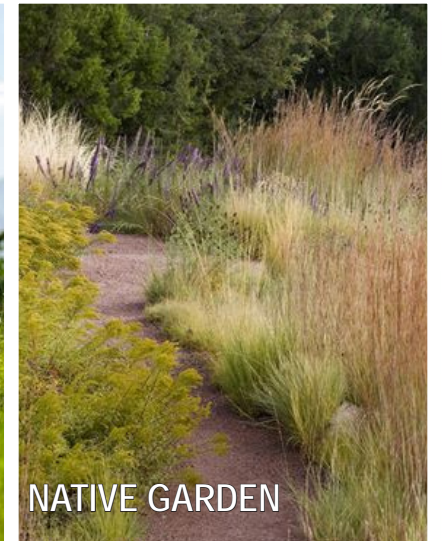
CONSIDER WHAT ASPECTS YOU LIKE ABOUT:

- 1. LAYOUT (LOCATION OF PARK ELEMENTS)*
- 2. ACTIVITIES / ELEMENTS / AMENITIES*
- 3. DESIGN FOCUS / THEME*

CONCEPT 1: COMMUNITY HUB



- Legend**
- Property Line
 - Community Hub - Core Area
 - Turf Grass
 - Stage and Event Lawn
 - Play Area
 - Splash Pad
 - Social Plaza/Hangout Space
 - Courts/Games
 - Bike Course
 - Nature Paths
 - Bridge
 - Restrooms
 - Picnic Shelter
 - Parking



CONCEPT 1: COMMUNITY HUB



CONCEPT 1: COMMUNITY HUB



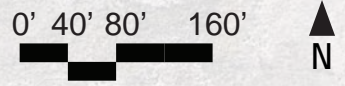
CONCEPT 2: PLAY FOCUS



CONCEPT 2: PLAY FOCUS



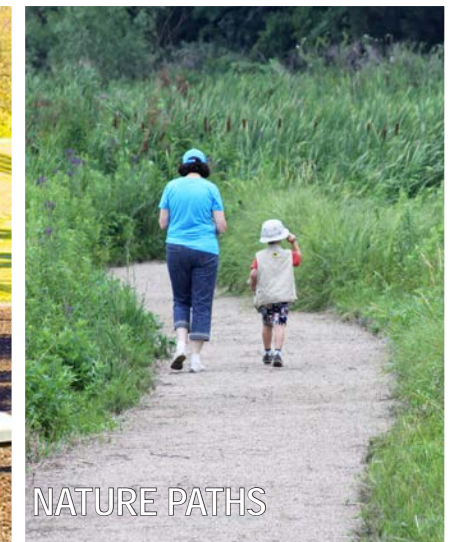
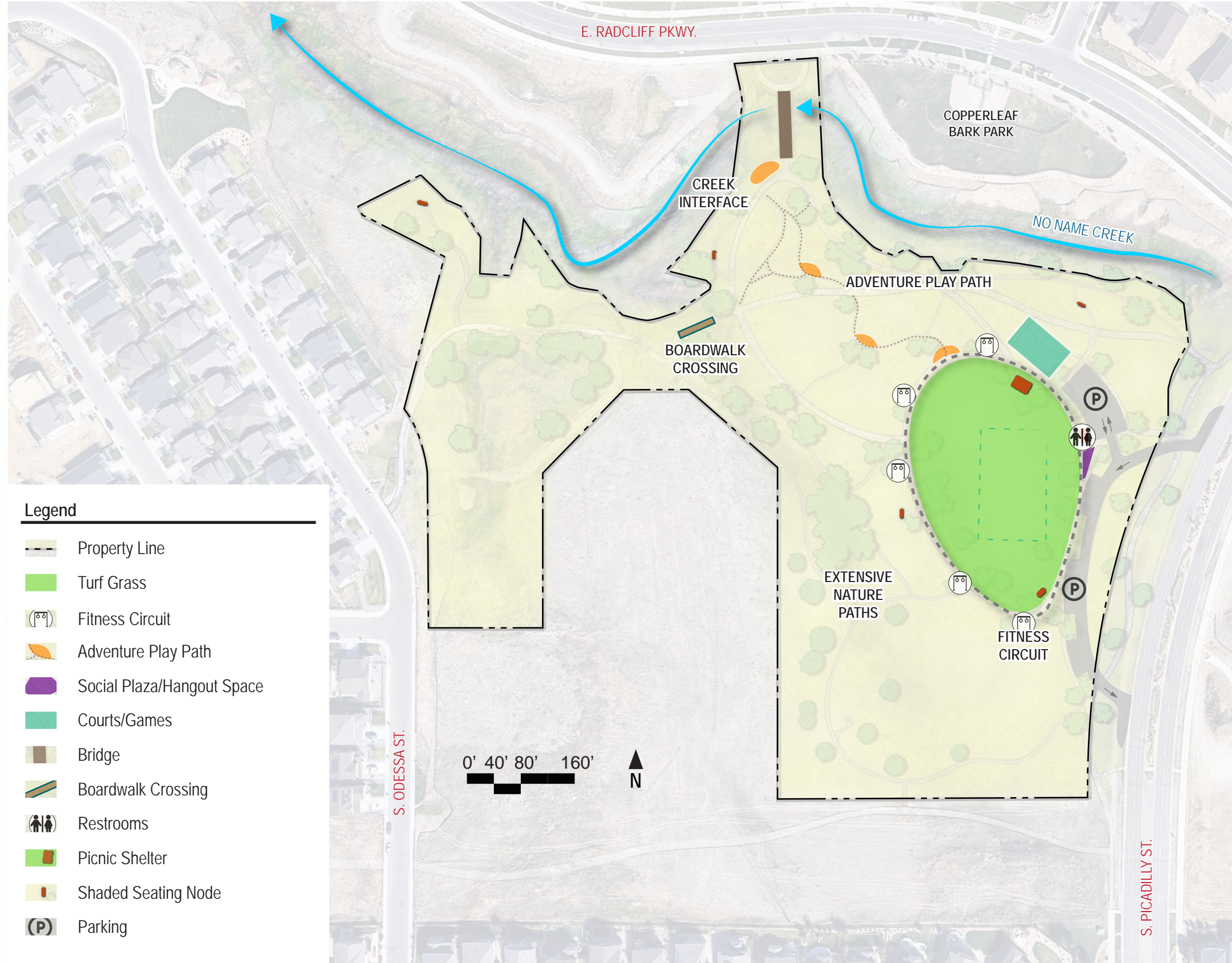
- Legend**
- Property Line
 - Turf Grass
 - Restored Riparian Ecosystem
 - Preserved Short-Grass Prairie
 - Foothills Pines Grove
 - Existing Detention Basin
 - Primary Concrete Paths
 - Nature Paths
 - Bridge
 - Potential Connections
 - Parking



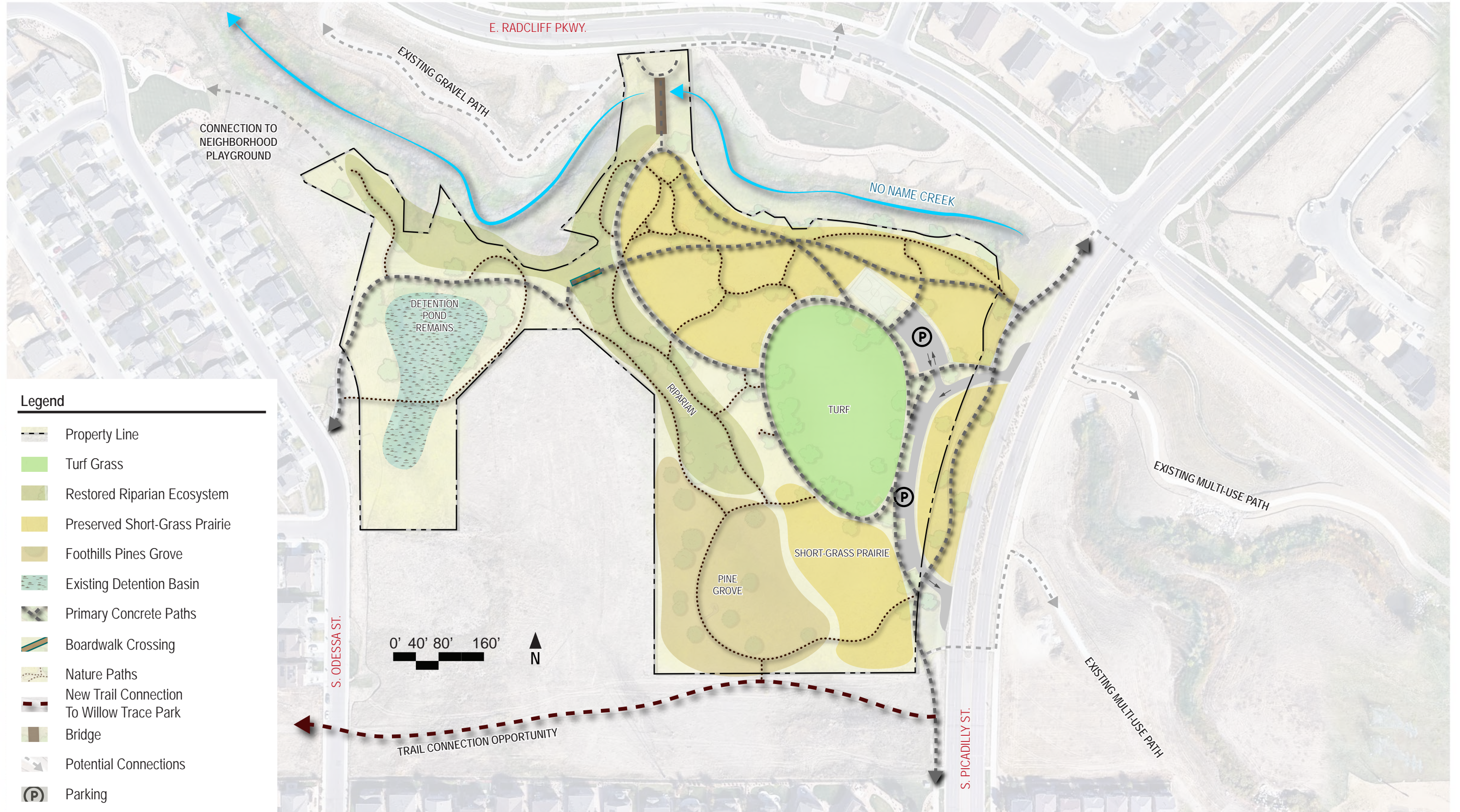
CONCEPT 2: PLAY FOCUS



CONCEPT 3: NATURE & TRAILS



CONCEPT 3: NATURE & TRAILS



- Legend**
-  Property Line
 -  Turf Grass
 -  Restored Riparian Ecosystem
 -  Preserved Short-Grass Prairie
 -  Foothills Pines Grove
 -  Existing Detention Basin
 -  Primary Concrete Paths
 -  Boardwalk Crossing
 -  Nature Paths
 -  New Trail Connection To Willow Trace Park
 -  Bridge
 -  Potential Connections
 -  Parking

CONCEPT 3: NATURE & TRAILS



WHAT DID YOU LIKE FROM THESE CONCEPTS FOR THE PARK?



CONCEPT 1: COMMUNITY HUB



CONCEPT 2: PLAY FOCUS



CONCEPT 3: NATURE & TRAILS

Consider Activities:

What amenities are you most excited about?

What amenities compliment each other?

What sort of theme is important to you?
Nature? Play? Social?

Consider Layouts:

Where do you want parking? On the edge or more centrally?

Have programming along the creek or keep natural buffer?

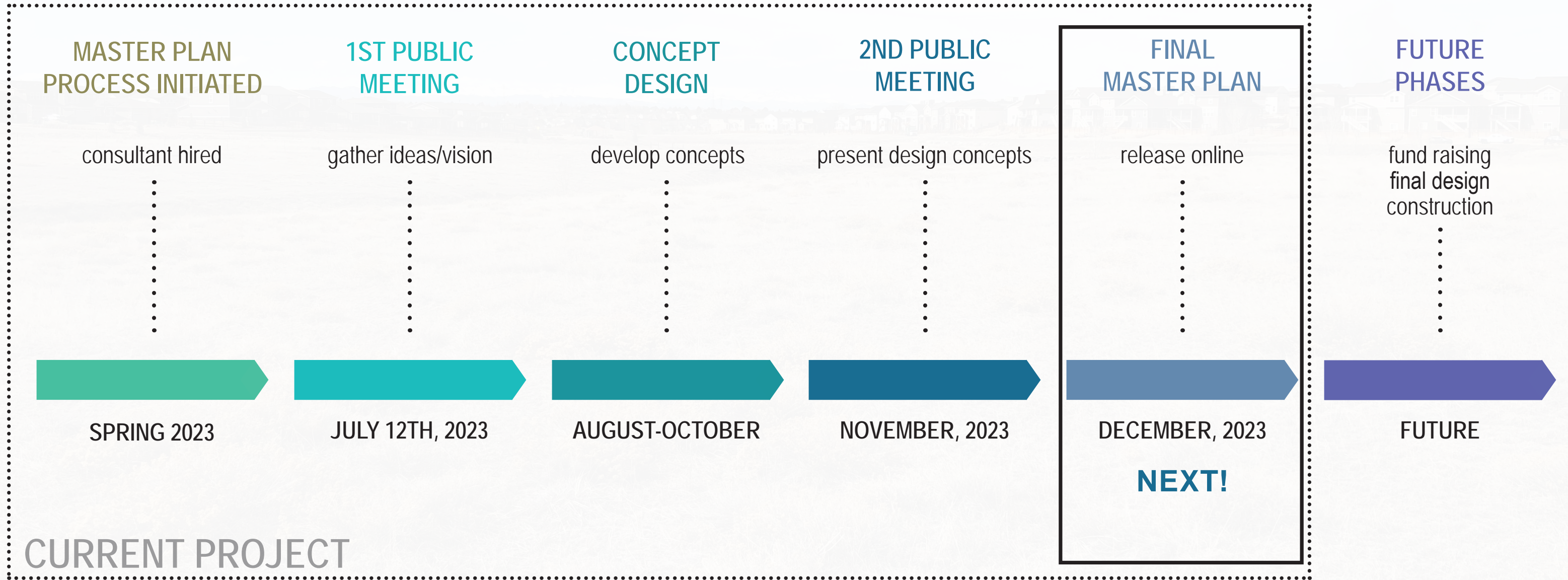
Do you want amenities spread out or more centralized?

New APRD Neighborhood Park -
Public Meeting #2 Survey



<https://forms.office.com/r/G24GvWNwnB>

PLANNING PROCESS: NEXT STEPS



This presentation and the survey will be posted
on the APRD website.

Thank you for your participation!

FINAL QUESTIONS?